

H39/1180

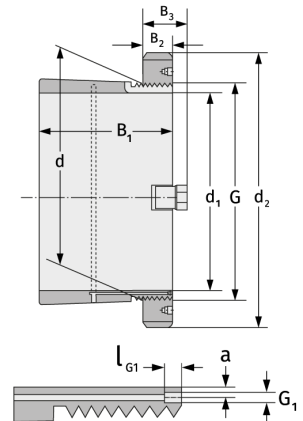
Clamping Sleeves



Details:

Main dimensions

d [mm]	1180	B ₃ [mm]	125
Weight [kg]	≈ 680	G [mm]	Tr1180
d ₁ [mm]	1120		x8
d ₂ [mm]	1320	G ₁ [mm]	G1/4
B ₁ [mm]	394	l _{G1} [mm]	15
B ₂ [mm]	100	a [mm]	12



Mating dimensions

Containing components

Groove / shaft nut	HM30/118
	0
Securing	MS30/100
	0