

H39/630

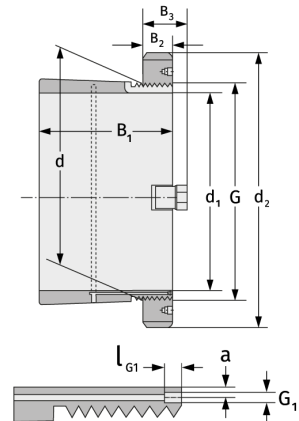
Clamping Sleeves



Details:

Main dimensions

d [mm]	630	B ₃ [mm]	97
Weight [kg]	≈ 120	G [mm]	Tr630x
d ₁ [mm]	600		6
d ₂ [mm]	730	G ₁ [mm]	M8
B ₁ [mm]	254	l _{G1} [mm]	12
B ₂ [mm]	75	a [mm]	6



Mating dimensions

Containing components

Groove / shaft nut

HM30/630

Securing

MS30/630