

H39/950

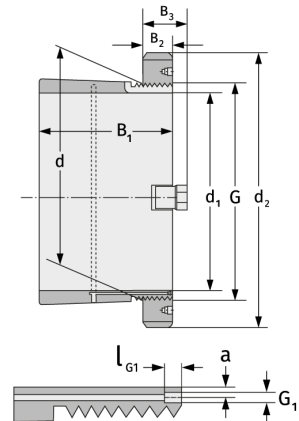
Clamping Sleeves



Details:

Main dimensions

d [mm]	950	B ₃ [mm]	125
Weight [kg]	≈ 362	G [mm]	Tr950x
d ₁ [mm]	900		8
d ₂ [mm]	1080	G ₁ [mm]	G1/8
B ₁ [mm]	344	l _{G1} [mm]	12
B ₂ [mm]	100	a [mm]	10



Mating dimensions

Containing components

Groove / shaft nut

HM30/950

Securing

MS30/950