

# H3980

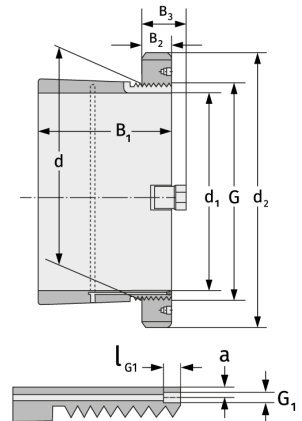
Clamping Sleeves



## Details:

### Main dimensions

d [mm]	400	B <sub>3</sub> [mm]	66
Weight [kg]	≈ 35	G [mm]	Tr400x
d <sub>1</sub> [mm]	380		5
d <sub>2</sub> [mm]	470	G <sub>1</sub> [mm]	M6
B <sub>1</sub> [mm]	168	l <sub>G1</sub> [mm]	7
B <sub>2</sub> [mm]	52	a [mm]	3.5



### Mating dimensions

### Containing components

Groove / shaft nut

HM3080

Securing

MS3076