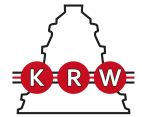


H3992

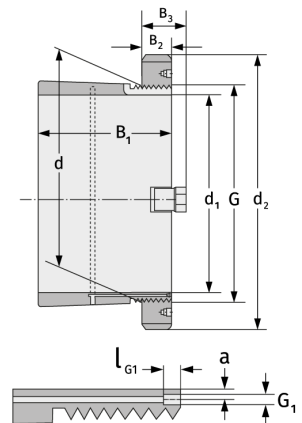
Clamping Sleeves



Details:

Main dimensions

d [mm]	460	B ₃ [mm]	77
Weight [kg]	≈ 59.9	G [mm]	Tr460x
d ₁ [mm]	430		5
d ₂ [mm]	540	G ₁ [mm]	M8
B ₁ [mm]	189	l _{G1} [mm]	12
B ₂ [mm]	60	a [mm]	6.5



Mating dimensions

Containing components

Groove / shaft nut	HM3092
Securing	MS3088