

# HM31/710

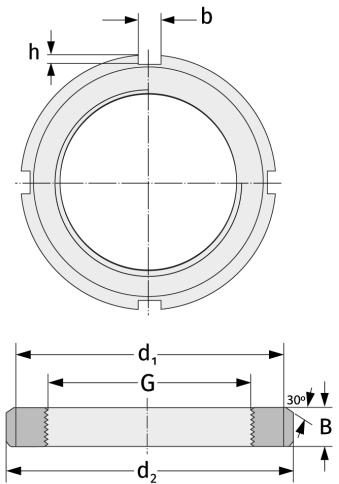
Grooved Nuts



## Details:

### Main dimensions

Weight [kg]	≈ 180	B [mm]	106
G [mm]	Tr710x 7	b [mm]	55
		h [mm]	30
d <sub>1</sub> [mm]	825		
d <sub>2</sub> [mm]	900		



### Mating dimensions

### Containing components

Securing

MS31/710