

Q336MPB

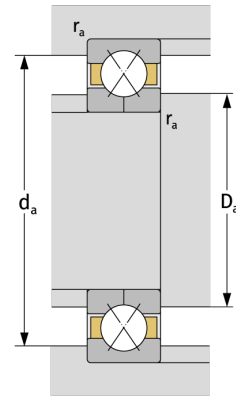
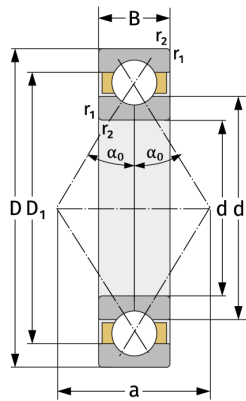
Four Point Contact Ball Bearings (metric)



Details:

Main dimensions

d [mm]	180	D_1 [mm]	≈ 307.8
D [mm]	380	$r_{1,2}$ [mm]	4
B [mm]	75	α_0 [°]	23
Weight [kg]	≈ 47.1	a [mm]	≈ 119
d_1 [mm]	≈ 252.2		



Mating dimensions

$d_{a, \min}$ [mm]	197
$D_{a, \max}$ [mm]	363
$r_{a, \max}$ [mm]	3

Calculation data

C [kN]	715
C_0 [kN]	1120
C_u [kN]	33
n_{th} [min ⁻¹]	1428
n_g [min ⁻¹]	3000