

QJ1017MPA

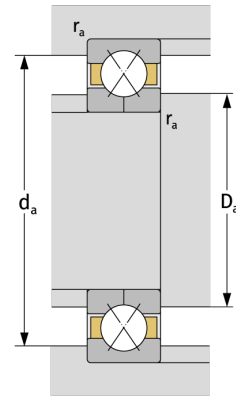
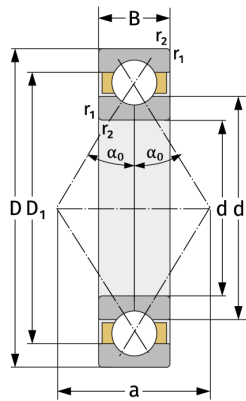
Four Point Contact Ball Bearings (metric)



Details:

Main dimensions

d [mm]	85	D_1 [mm]	≈ 114.9
D [mm]	130	$r_{1,2}$ [mm]	1.1
B [mm]	22	α_0 [°]	35
Weight [kg]	≈ 1.14	a [mm]	≈ 75
d_1 [mm]	≈ 100.2		



Mating dimensions

$d_{a, \min}$ [mm]	91
$D_{a, \max}$ [mm]	124
$r_{a, \max}$ [mm]	1

Calculation data

C [kN]	98.8
C_0 [kN]	114
C_u [kN]	5.29
n_{th} [min ⁻¹]	4076
n_g [min ⁻¹]	8200