

QJ1917MPA

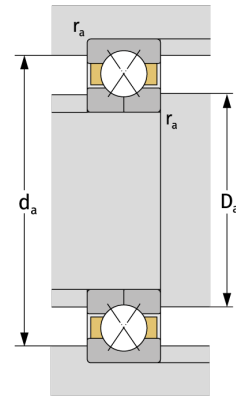
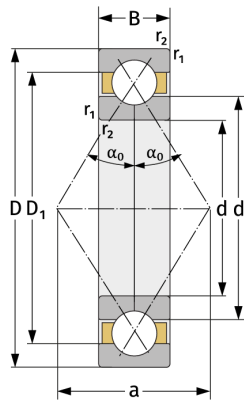
Four Point Contact Ball Bearings (metric)



Details:

Main dimensions

d [mm]	85	D_1 [mm]	≈ 107.9
D [mm]	120	$r_{1,2}$ [mm]	1.1
B [mm]	18	α_0 [°]	35
Weight [kg]	≈ 0.685	a [mm]	≈ 72
d_1 [mm]	≈ 97.1		



Mating dimensions

$d_{a, \min}$ [mm]	91
$D_{a, \max}$ [mm]	114
$r_{a, \max}$ [mm]	1

Calculation data

C [kN]	64.4
C_0 [kN]	83.4
C_u [kN]	3.99
n_{th} [min ⁻¹]	4002
n_g [min ⁻¹]	8600