

QJ1921MPA

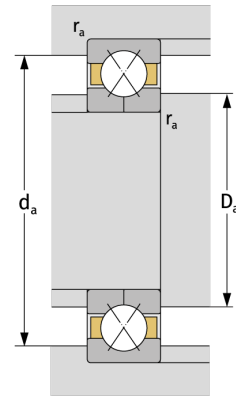
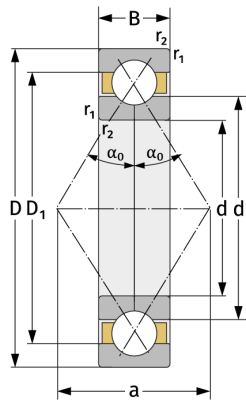
Four Point Contact Ball Bearings (metric)



Details:

Main dimensions

d [mm]	105	D_1 [mm]	≈ 131.2
D [mm]	145	$r_{1,2}$ [mm]	1.1
B [mm]	20	α_0 [°]	35
Weight [kg]	≈ 1.07	a [mm]	≈ 88
d_1 [mm]	≈ 118.8		



Mating dimensions

$d_{a, \min}$ [mm]	111
$D_{a, \max}$ [mm]	139
$r_{a, \max}$ [mm]	1

Calculation data

C [kN]	84.7
C_0 [kN]	117
C_u [kN]	5.09
n_{th} [min ⁻¹]	3311
n_g [min ⁻¹]	7000