

QJ1964MPA

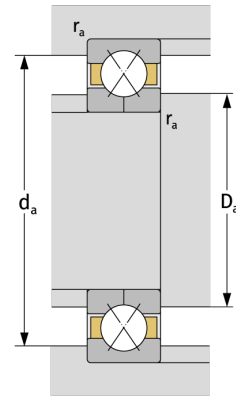
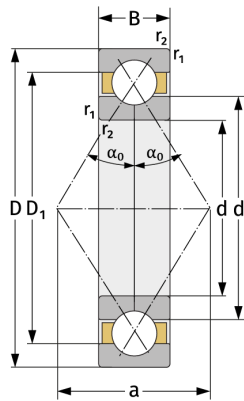
Four Point Contact Ball Bearings (metric)



Details:

Main dimensions

d [mm]	320	D_1 [mm]	≈ 398.6
D [mm]	440	$r_{1,2}$ [mm]	3
B [mm]	56	α_0 [°]	35
Weight [kg]	≈ 27.6	a [mm]	≈ 266
d_1 [mm]	≈ 361.4		



Mating dimensions

$d_{a, \min}$ [mm]	332.4
$D_{a, \max}$ [mm]	427.6
$r_{a, \max}$ [mm]	2.5

Calculation data

C [kN]	520
C_0 [kN]	1050
C_u [kN]	26.8
n_{th} [min ⁻¹]	1087
n_g [min ⁻¹]	2100