

QJ1988MPA

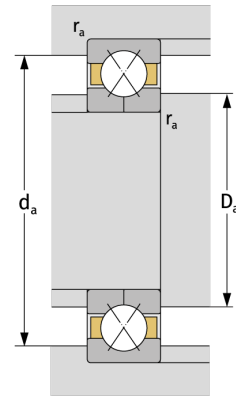
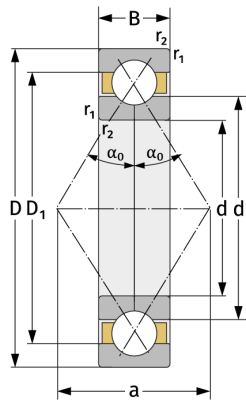
Four Point Contact Ball Bearings (metric)



Details:

Main dimensions

d [mm]	440	D_1 [mm]	≈ 544.8
D [mm]	600	$r_{1,2}$ [mm]	4
B [mm]	74	α_0 [°]	35
Weight [kg]	≈ 66.7	a [mm]	≈ 364
d_1 [mm]	≈ 495.3		



Mating dimensions

$d_{a, \min}$ [mm]	454.6
$D_{a, \max}$ [mm]	585.4
$r_{a, \max}$ [mm]	3

Calculation data

C [kN]	770
C_0 [kN]	1870
C_u [kN]	40.9
n_{th} [min ⁻¹]	725
n_g [min ⁻¹]	1500