

619/600M

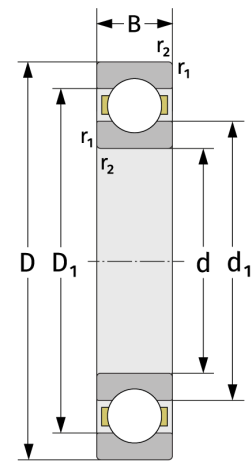
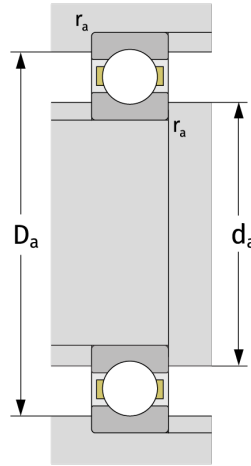
Deep Groove Ball Bearings (single row, metric)



Details:

Main dimensions

d [mm]	600	d ₁ [mm]	≈ 662.6
D [mm]	800	D ₁ [mm]	≈ 738.6
B [mm]	90	r _{1,2} [mm]	5
Weight [kg]	≈ 129		



Mating dimensions

d _{a,min} [mm]	618
D _{a,max} [mm]	782
r _{a,max} [mm]	4

Calculation data

C [kN]	585
C ₀ [kN]	1200
C _u [kN]	22.2
n _{th} [min ⁻¹]	875
n _g [min ⁻¹]	1200
f ₀	16,4