

# 70872MP

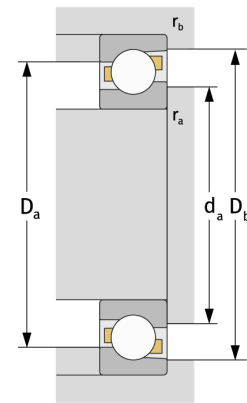
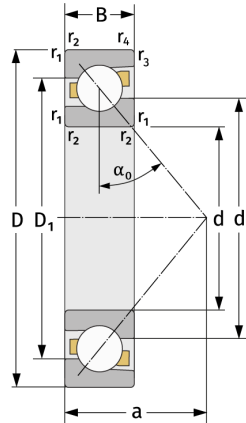
Angular Contact Ball Bearings (single row, metric)



## Details:

### Main dimensions

d [mm]	360	$D_1$ [mm]	$\approx 410.5$
D [mm]	440	$r_{1,2}$ [mm]	1.5
B [mm]	25	$r_{3,4}$ [mm]	1
Weight [kg]	$\approx 8.19$	$\alpha_0$ [°]	30
$d_1$ [mm]	$\approx 391$	a [mm]	$\approx 128$



### Mating dimensions

$d_{a, \min}$  [mm]

367

### Calculation data

C [kN]

133

$D_{a, \max}$  [mm]

433

$C_0$  [kN]

254

$D_{b, \max}$  [mm]

435.4

$C_u$  [kN]

6.3

$r_{a, \max}$  [mm]

1.5

$n_{th}$  [min<sup>-1</sup>]

1011

$r_{b, \max}$  [mm]

1

$n_g$  [min<sup>-1</sup>]

1600