

70880MP

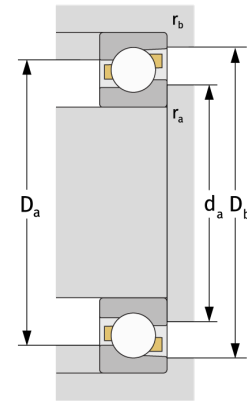
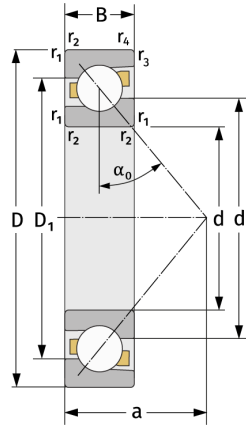
Angular Contact Ball Bearings (single row, metric)



Details:

Main dimensions

d [mm]	400	D_1 [mm]	≈ 463.4
D [mm]	500	$r_{1,2}$ [mm]	2
B [mm]	31	$r_{3,4}$ [mm]	1
Weight [kg]	≈ 14.3	α_0 [°]	30
d_1 [mm]	≈ 438.6	a [mm]	≈ 145



Mating dimensions

$d_{a, \min}$ [mm]	408.8
$D_{a, \max}$ [mm]	491.2
$D_{b, \max}$ [mm]	495.4
$r_{a, \max}$ [mm]	2
$r_{b, \max}$ [mm]	1

Calculation data

C [kN]	196
C_0 [kN]	366
C_u [kN]	8.57
n_{th} [min ⁻¹]	905
n_g [min ⁻¹]	1400