

# 7092MP

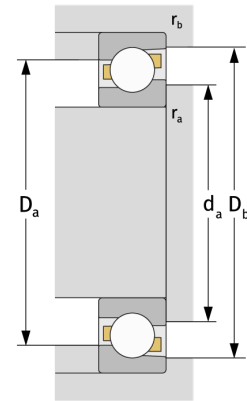
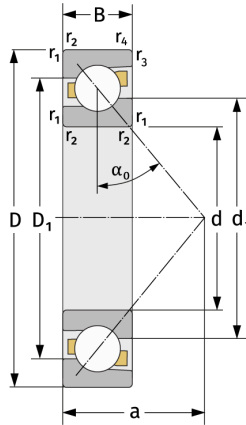
Angular Contact Ball Bearings (single row, metric)



## Details:

### Main dimensions

d [mm]	460	$D_1$ [mm]	$\approx 600.2$
D [mm]	680	$r_{1,2}$ [mm]	6
B [mm]	100	$r_{3,4}$ [mm]	3
Weight [kg]	$\approx 120$	$\alpha_0$ [°]	30
$d_1$ [mm]	$\approx 546.2$	a [mm]	$\approx 215$



Mating dimensions		Calculation data	
$d_{a, \min}$ [mm]	483	C [kN]	710
$D_{a, \max}$ [mm]	657	$C_0$ [kN]	1510
$D_{b, \max}$ [mm]	667.6	$C_u$ [kN]	31.1
$r_{a, \max}$ [mm]	5	$n_{th}$ [min <sup>-1</sup> ]	820
$r_{b, \max}$ [mm]	2.5	$n_g$ [min <sup>-1</sup> ]	1100