

71888MP

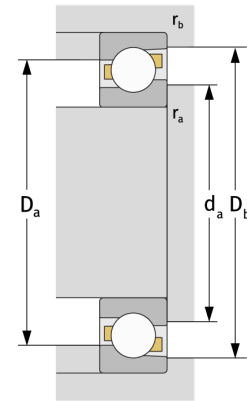
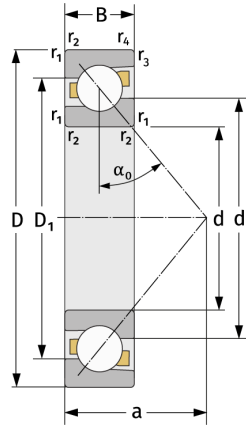
Angular Contact Ball Bearings (single row, metric)



Details:

Main dimensions

d [mm]	440	D_1 [mm]	≈ 508.1
D [mm]	540	$r_{1,2}$ [mm]	2.1
B [mm]	46	$r_{3,4}$ [mm]	1.1
Weight [kg]	≈ 20.9	α_0 [°]	30
d_1 [mm]	≈ 474.5	a [mm]	≈ 164



Mating dimensions		Calculation data	
$d_{a, \min}$ [mm]	450.2	C [kN]	292
$D_{a, \max}$ [mm]	529.8	C_0 [kN]	550
$D_{b, \max}$ [mm]	534	C_u [kN]	12.2
$r_{a, \max}$ [mm]	2.1	n_{th} [min ⁻¹]	901
$r_{b, \max}$ [mm]	1	n_g [min ⁻¹]	1300