

72/500B.MP

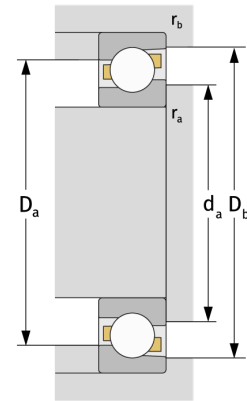
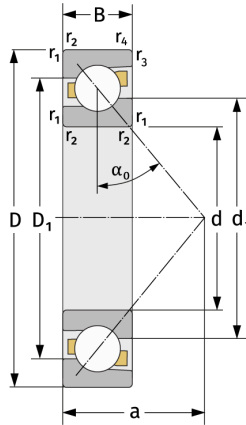
Angular Contact Ball Bearings (single row, metric)



Details:

Main dimensions

d [mm]	500	D_1 [mm]	≈ 758.9
D [mm]	920	$r_{1,2}$ [mm]	7.5
B [mm]	136	$r_{3,4}$ [mm]	4
Weight [kg]	≈ 422	α_0 [°]	40
d_1 [mm]	≈ 671.4	a [mm]	≈ 366



Mating dimensions		Calculation data	
$d_{a, \min}$ [mm]	532	C [kN]	1130
$D_{a, \max}$ [mm]	888	C_0 [kN]	2710
$D_{b, \max}$ [mm]	903	C_u [kN]	49.8
$r_{a, \max}$ [mm]	6	n_{th} [min ⁻¹]	608
$r_{b, \max}$ [mm]	3	n_g [min ⁻¹]	780