

7252B.MP

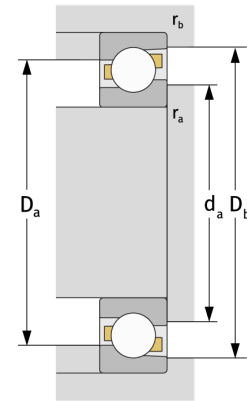
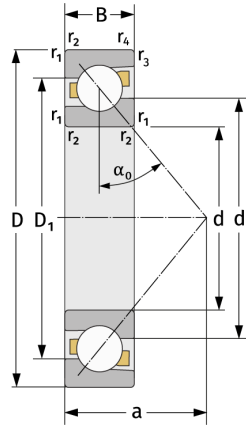
Angular Contact Ball Bearings (single row, metric)



Details:

Main dimensions

d [mm]	260	D_1 [mm]	≈ 398.8
D [mm]	480	$r_{1,2}$ [mm]	5
B [mm]	80	$r_{3,4}$ [mm]	2
Weight [kg]	≈ 65.7	α_0 [°]	40
d_1 [mm]	≈ 347.3	a [mm]	≈ 195



Mating dimensions		Calculation data	
$d_{a, \min}$ [mm]	280	C [kN]	492
$D_{a, \max}$ [mm]	460	C_0 [kN]	770
$D_{b, \max}$ [mm]	469	C_u [kN]	20
$r_{a, \max}$ [mm]	4	n_{th} [min ⁻¹]	1453
$r_{b, \max}$ [mm]	2	n_g [min ⁻¹]	1700