

7260B.MP

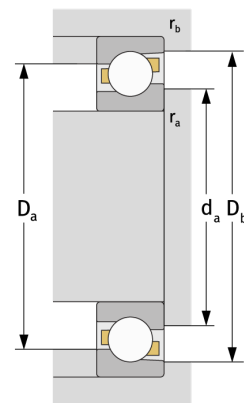
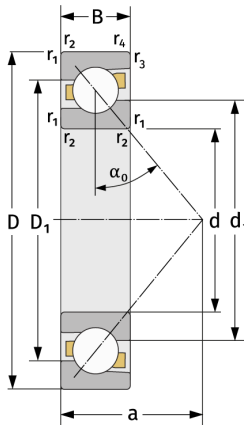
Angular Contact Ball Bearings (single row, metric)



Details:

Main dimensions

d [mm]	300	D_1 [mm]	≈ 451.6
D [mm]	540	$r_{1,2}$ [mm]	5
B [mm]	85	$r_{3,4}$ [mm]	2
Weight [kg]	≈ 86.7	α_0 [°]	40
d_1 [mm]	≈ 395.1	a [mm]	≈ 219



Mating dimensions		Calculation data	
$d_{a, \min}$ [mm]	320	C [kN]	560
$D_{a, \max}$ [mm]	520	C_0 [kN]	940
$D_{b, \max}$ [mm]	529	C_u [kN]	22.8
$r_{a, \max}$ [mm]	4	n_{th} [min ⁻¹]	1227
$r_{b, \max}$ [mm]	2	n_g [min ⁻¹]	1500