

7296B.MP

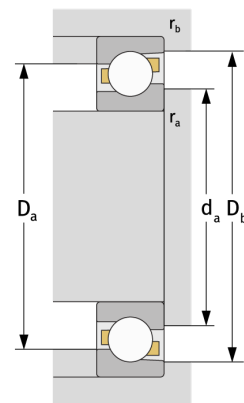
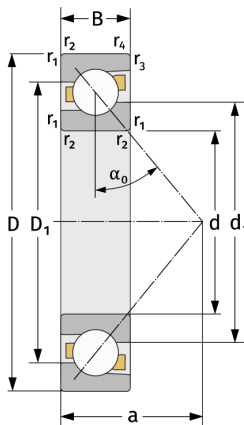
Angular Contact Ball Bearings (single row, metric)



Details:

Main dimensions

d [mm]	480	D_1 [mm]	≈ 721
D [mm]	870	$r_{1,2}$ [mm]	7.5
B [mm]	125	$r_{3,4}$ [mm]	4
Weight [kg]	≈ 343	α_0 [°]	40
d_1 [mm]	≈ 638.7	a [mm]	≈ 346



Mating dimensions

$d_{a, \min}$ [mm]	512
$D_{a, \max}$ [mm]	838
$D_{b, \max}$ [mm]	853
$r_{a, \max}$ [mm]	6
$r_{b, \max}$ [mm]	3

Calculation data

C [kN]	1040
C_0 [kN]	2400
C_u [kN]	45.4
n_{th} [min ⁻¹]	644
n_g [min ⁻¹]	830