

7364B.MP

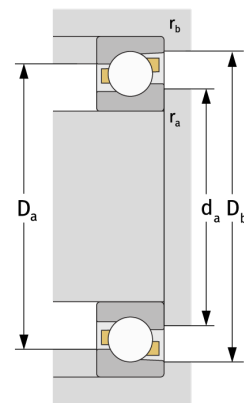
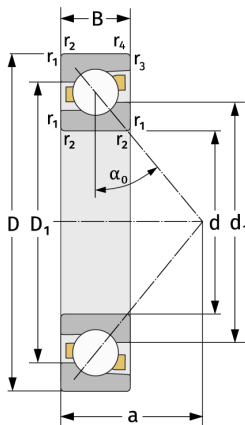
Angular Contact Ball Bearings (single row, metric)



Details:

Main dimensions

d [mm]	320	D_1 [mm]	≈ 536.7
D [mm]	670	$r_{1,2}$ [mm]	7.5
B [mm]	112	$r_{3,4}$ [mm]	4
Weight [kg]	≈ 202	α_0 [°]	40
d_1 [mm]	≈ 462.1	a [mm]	≈ 264



Mating dimensions		Calculation data	
$d_{a, \min}$ [mm]	352	C [kN]	805
$D_{a, \max}$ [mm]	638	C_0 [kN]	1500
$D_{b, \max}$ [mm]	653	C_u [kN]	33.2
$r_{a, \max}$ [mm]	6	n_{th} [min ⁻¹]	859
$r_{b, \max}$ [mm]	3	n_g [min ⁻¹]	1300