

# 7372B.MP

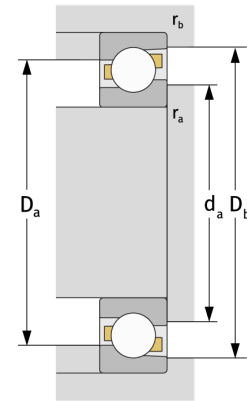
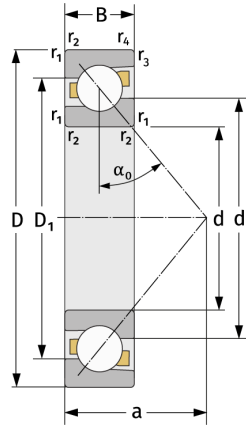
Angular Contact Ball Bearings (single row, metric)



## Details:

### Main dimensions

d [mm]	360	$D_1$ [mm]	≈ 601
D [mm]	750	$r_{1,2}$ [mm]	7.5
B [mm]	125	$r_{3,4}$ [mm]	4
Weight [kg]	≈ 280	$\alpha_0$ [°]	40
$d_1$ [mm]	≈ 518.7	a [mm]	≈ 295



Mating dimensions		Calculation data	
$d_{a, \min}$ [mm]	392	C [kN]	920
$D_{a, \max}$ [mm]	718	$C_0$ [kN]	1830
$D_{b, \max}$ [mm]	733	$C_u$ [kN]	38.2
$r_{a, \max}$ [mm]	6	$n_{th}$ [min <sup>-1</sup> ]	751
$r_{b, \max}$ [mm]	3	$n_g$ [min <sup>-1</sup> ]	1100