

# AH39/1250

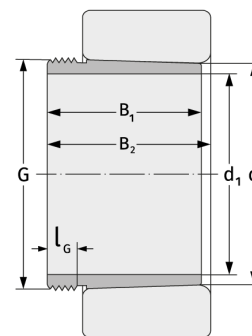
Withdrawal Sleeves



## Details:

### Main dimensions

d [mm]	1250	B <sub>1</sub> [mm]	340
Weight [kg]	≈ 333	l <sub>G1</sub> [mm]	55
d <sub>1</sub> [mm]	1180	G [mm]	Tr1285 x8



### Mating dimensions

### Calculation data