

# H218

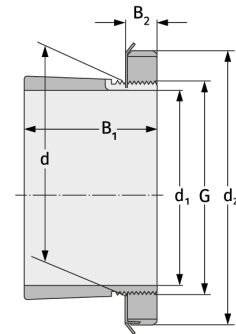
Clamping Sleeves



## Details:

### Main dimensions

d [mm]	90	B <sub>1</sub> [mm]	52
Weight [kg]	≈ 1.19	B <sub>2</sub> [mm]	18
d <sub>1</sub> [mm]	80	G [mm]	M90x2
d <sub>2</sub> [mm]	120		



### Mating dimensions

### Containing components

Groove / shaft nut	KM18
Securing	MB18