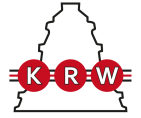


# H2316

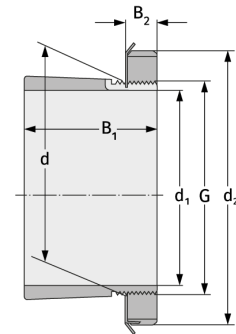
Clamping Sleeves



## Details:

### Main dimensions

d [mm]	80	B <sub>1</sub> [mm]	78
Weight [kg]	≈ 1.28	B <sub>2</sub> [mm]	17
d <sub>1</sub> [mm]	70	G [mm]	M80x2
d <sub>2</sub> [mm]	105		



### Mating dimensions

### Containing components

Groove / shaft nut	KM16
Securing	MB16