

# H2348X

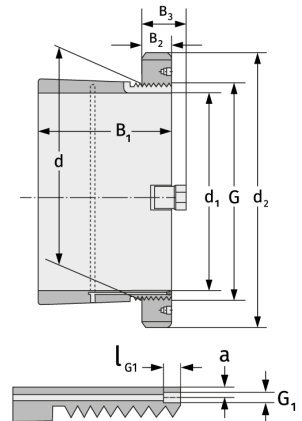
Clamping Sleeves



## Details:

### Main dimensions

d [mm]	240	B <sub>2</sub> [mm]	37
Weight [kg]	≈ 19.7	G [mm]	Tr240x
d <sub>1</sub> [mm]	220		4
d <sub>2</sub> [mm]	300	G <sub>1</sub> [mm]	M6
B <sub>1</sub> [mm]	199	l <sub>G1</sub> [mm]	7
		a [mm]	4.2



### Mating dimensions

### Containing components

Groove / shaft nut

HM48T

Securing

MB48