

H240/500

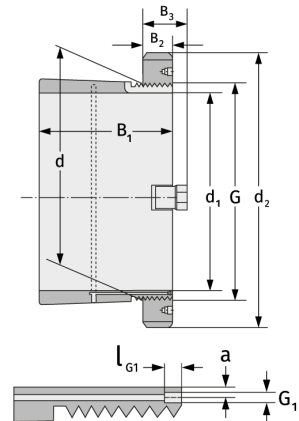
Clamping Sleeves



Details:

Main dimensions

d [mm]	500	B ₃ [mm]	85
Weight [kg]	≈ 93.8	G [mm]	Tr500x
d ₁ [mm]	470		5
d ₂ [mm]	580	G ₁ [mm]	M8
B ₁ [mm]	309	l _{G1} [mm]	12
B ₂ [mm]	68	a [mm]	6.5



Mating dimensions

Containing components

Groove / shaft nut

HM30/500

Securing

MS3096