

H240/750

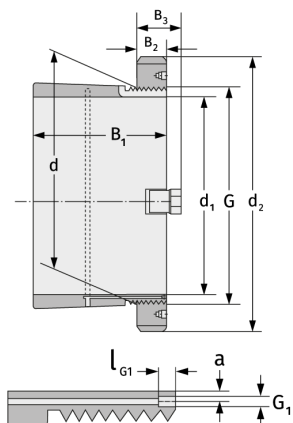
Clamping Sleeves



Details:

Main dimensions

d [mm]	750	B ₃ [mm]	112
Weight [kg]	≈ 278	G [mm]	Tr750x
d ₁ [mm]	710		7
d ₂ [mm]	870	G ₁ [mm]	G1/8
B ₁ [mm]	460	l _{G1} [mm]	12
B ₂ [mm]	90	a [mm]	8



Mating dimensions

Containing components

Groove / shaft nut	HM30/750
Securing	MS30/750