

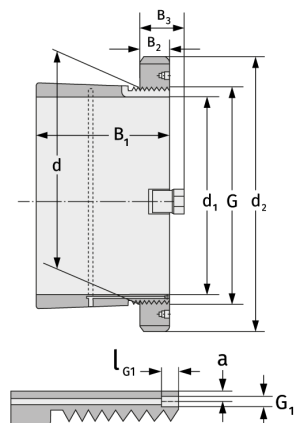
# H241/1180

Clamping Sleeves



## Details:

Main dimensions			
d [mm]	1180	B <sub>3</sub> [mm]	154
Weight [kg]	≈ 1290	G [mm]	Tr1180
d <sub>1</sub> [mm]	1120		x8
d <sub>2</sub> [mm]	1420	G <sub>1</sub> [mm]	G1/4
B <sub>1</sub> [mm]	845	l <sub>G1</sub> [mm]	15
B <sub>2</sub> [mm]	125	a [mm]	13



Mating dimensions	Containing components	
	Groove / shaft nut	HM31/118 0
	Securing	MS31/100 0