

H241/1250

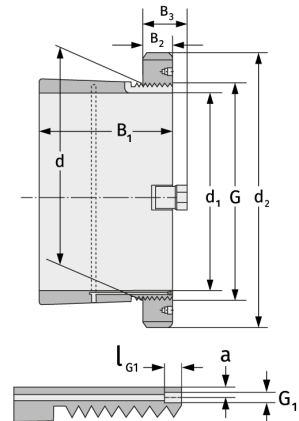
Clamping Sleeves



Details:

Main dimensions

d [mm]	1250	B ₃ [mm]	154
Weight [kg]	≈ 1549.6	G [mm]	Tr1250 x8
d ₁ [mm]	1180	G ₁ [mm]	G1/4
d ₂ [mm]	1490	l _{G1} [mm]	15
B ₁ [mm]	885	a [mm]	14
B ₂ [mm]	125		



Mating dimensions

Containing components

Groove / shaft nut	HM31/125 0
Securing	MS31/100 0