

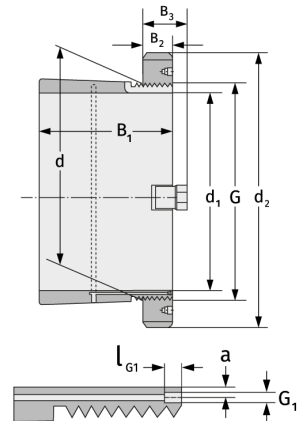
H241/1320

Clamping Sleeves



Details:

Main dimensions			
d [mm]	1320	B ₃ [mm]	154
Weight [kg]	≈ 1700	G [mm]	Tr1320
d ₁ [mm]	1250		x8
d ₂ [mm]	1560	G ₁ [mm]	G1/4
B ₁ [mm]	935	l _{G1} [mm]	15
B ₂ [mm]	125	a [mm]	14



Mating dimensions	Containing components	
	Groove / shaft nut	HM31/132 0
	Securing	MS31/100 0