

H241/500

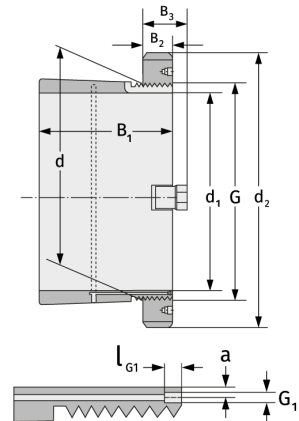
Clamping Sleeves



Details:

Main dimensions

d [mm]	500	B ₃ [mm]	100
Weight [kg]	≈ 155.8	G [mm]	Tr500x
d ₁ [mm]	470		5
d ₂ [mm]	630	G ₁ [mm]	M8
B ₁ [mm]	430	l _{G1} [mm]	12
B ₂ [mm]	80	a [mm]	6.5



Mating dimensions

Containing components

Groove / shaft nut	HM31/500
Securing	MS31/500