

H241/670

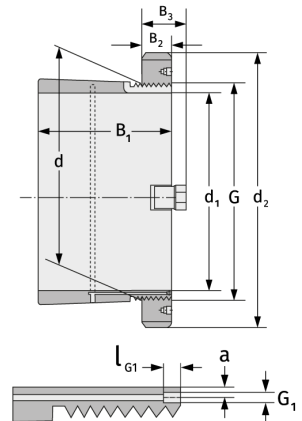
Clamping Sleeves



Details:

Main dimensions

d [mm]	670	B ₃ [mm]	131
Weight [kg]	≈ 355	G [mm]	Tr670x
d ₁ [mm]	630		6
d ₂ [mm]	850	G ₁ [mm]	G1/8
B ₁ [mm]	548	l _{G1} [mm]	12
B ₂ [mm]	106	a [mm]	8



Mating dimensions

Containing components

Groove / shaft nut

HM31/670

Securing

MS31/670