

# H241/710

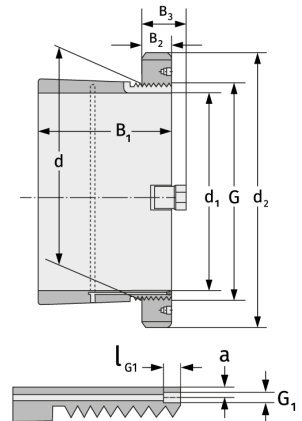
Clamping Sleeves



## Details:

### Main dimensions

d [mm]	710	B <sub>3</sub> [mm]	135
Weight [kg]	≈ 412.1	G [mm]	Tr710x
d <sub>1</sub> [mm]	670		7
d <sub>2</sub> [mm]	900	G <sub>1</sub> [mm]	G1/8
B <sub>1</sub> [mm]	577	l <sub>G1</sub> [mm]	12
B <sub>2</sub> [mm]	106	a [mm]	8



### Mating dimensions

### Containing components

Groove / shaft nut

HM31/710

Securing

MS31/710