

H24192

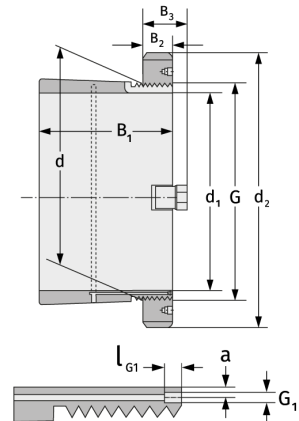
Clamping Sleeves



Details:

Main dimensions

d [mm]	460	B ₃ [mm]	95
Weight [kg]	≈ 124	G [mm]	Tr460x
d ₁ [mm]	430		5
d ₂ [mm]	580	G ₁ [mm]	M8
B ₁ [mm]	398	l _{G1} [mm]	12
B ₂ [mm]	75	a [mm]	6.5



Mating dimensions

Containing components

Groove / shaft nut

HM3192

Securing

MS3188