

# H30/1500

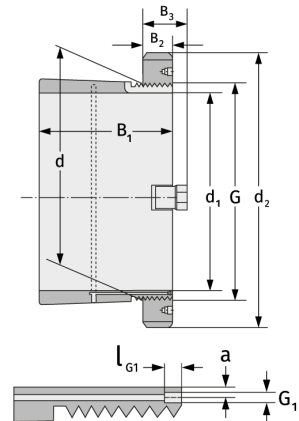
Clamping Sleeves



## Details:

### Main dimensions

d [mm]	1500	B <sub>3</sub> [mm]	135
Weight [kg]	≈ 1530	G [mm]	Tr1500
d <sub>1</sub> [mm]	1400		x8
d <sub>2</sub> [mm]	1650	G <sub>1</sub> [mm]	G1/4
B <sub>1</sub> [mm]	600	l <sub>G1</sub> [mm]	15
B <sub>2</sub> [mm]	110	a [mm]	15



### Mating dimensions

### Containing components

Groove / shaft nut

HM30/150

0

Securing

MS30/150

0