

H3068

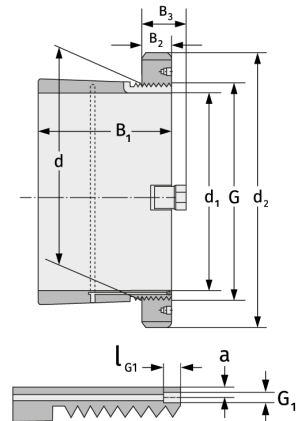
Clamping Sleeves



Details:

Main dimensions

d [mm]	340	B ₃ [mm]	58
Weight [kg]	≈ 28.7	G [mm]	Tr340x
d ₁ [mm]	320		5
d ₂ [mm]	400	G ₁ [mm]	M6
B ₁ [mm]	187	l _{G1} [mm]	7
B ₂ [mm]	45	a [mm]	3.5



Mating dimensions

Containing components

Groove / shaft nut

HM3068

Securing

MS3064