

# H308

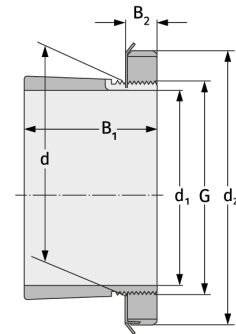
Clamping Sleeves



## Details:

### Main dimensions

d [mm]	40	B <sub>1</sub> [mm]	36
Weight [kg]	≈ 0.189	B <sub>2</sub> [mm]	10
d <sub>1</sub> [mm]	35	G [mm]	M40x1.
d <sub>2</sub> [mm]	58		5



### Mating dimensions

### Containing components

Groove / shaft nut	KM8
Securing	MB8