

H31/710

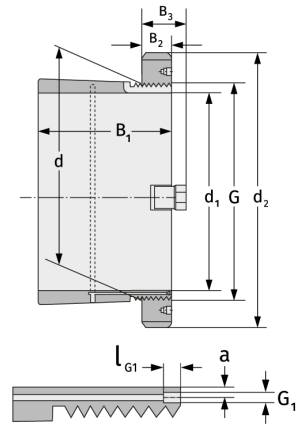
Clamping Sleeves



Details:

Main dimensions

d [mm]	710	B ₃ [mm]	135
Weight [kg]	≈ 378	G [mm]	Tr710x
d ₁ [mm]	670		7
d ₂ [mm]	900	G ₁ [mm]	G1/8
B ₁ [mm]	467	l _{G1} [mm]	12
B ₂ [mm]	106	a [mm]	8



Mating dimensions

Containing components

Groove / shaft nut	HM31/710
Securing	MS31/710