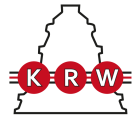


# H31/950

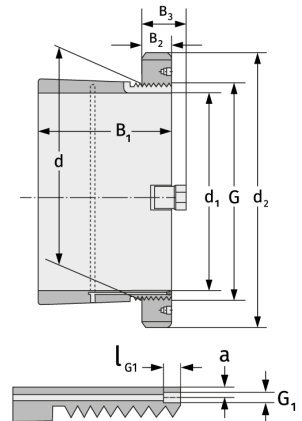
Clamping Sleeves



## Details:

### Main dimensions

d [mm]	950	B <sub>3</sub> [mm]	154
Weight [kg]	≈ 738	G [mm]	Tr950x
d <sub>1</sub> [mm]	900		8
d <sub>2</sub> [mm]	1170	G <sub>1</sub> [mm]	G1/8
B <sub>1</sub> [mm]	583	l <sub>G1</sub> [mm]	12
B <sub>2</sub> [mm]	125	a [mm]	10



### Mating dimensions

### Containing components

Groove / shaft nut

HM31/950

Securing

MS31/950