

H3126

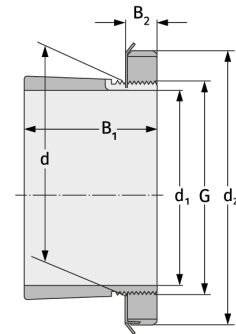
Clamping Sleeves



Details:

Main dimensions

d [mm]	130	B ₁ [mm]	92
Weight [kg]	≈ 3.66	B ₂ [mm]	23
d ₁ [mm]	115	G [mm]	M130x
d ₂ [mm]	165		2



Mating dimensions

Containing components

Groove / shaft nut	KM26
Securing	MB26