

# H3168

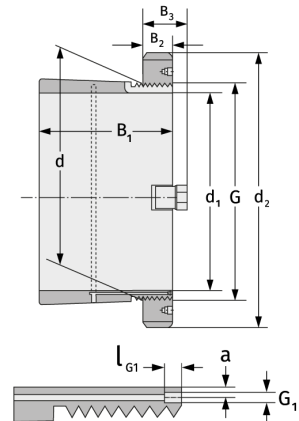
Clamping Sleeves



## Details:

### Main dimensions

d [mm]	340	B <sub>3</sub> [mm]	72
Weight [kg]	≈ 49.5	G [mm]	Tr340x
d <sub>1</sub> [mm]	320		5
d <sub>2</sub> [mm]	440	G <sub>1</sub> [mm]	M6
B <sub>1</sub> [mm]	254	l <sub>G1</sub> [mm]	7
B <sub>2</sub> [mm]	55	a [mm]	3.5



### Mating dimensions

### Containing components

Groove / shaft nut

HM3168

Securing

MS3168