

# H3296

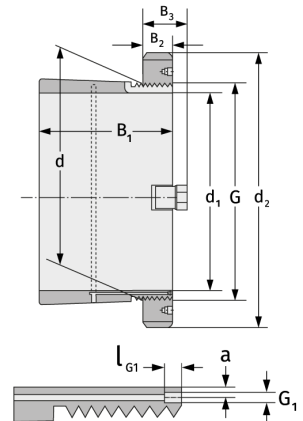
Clamping Sleeves



## Details:

### Main dimensions

d [mm]	480	B <sub>3</sub> [mm]	95
Weight [kg]	≈ 152	G [mm]	Tr480x
d <sub>1</sub> [mm]	450		5
d <sub>2</sub> [mm]	620	G <sub>1</sub> [mm]	M8
B <sub>1</sub> [mm]	397	l <sub>G1</sub> [mm]	12
B <sub>2</sub> [mm]	75	a [mm]	6.5



### Mating dimensions

### Containing components

Groove / shaft nut

HM3196

Securing

MS3196