

# H39/1000

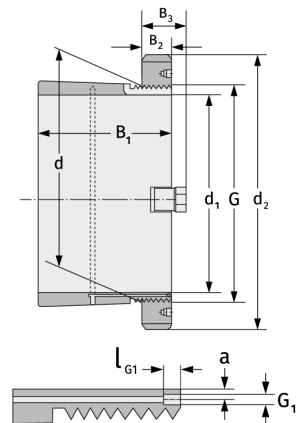
Clamping Sleeves



## Details:

### Main dimensions

d [mm]	1000	B <sub>3</sub> [mm]	125
Weight [kg]	≈ 407	G [mm]	Tr1000
d <sub>1</sub> [mm]	950		x8
d <sub>2</sub> [mm]	1140	G <sub>1</sub> [mm]	G1/8
B <sub>1</sub> [mm]	358	l <sub>G1</sub> [mm]	12
B <sub>2</sub> [mm]	100	a [mm]	10



### Mating dimensions

### Containing components

Groove / shaft nut

HM30/100

0

Securing

MS30/100

0