

H39/1060

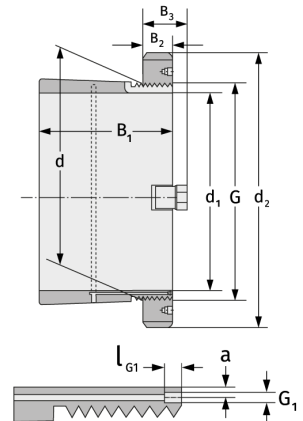
Clamping Sleeves



Details:

Main dimensions

d [mm]	1060	B ₃ [mm]	125
Weight [kg]	≈ 490	G [mm]	Tr1060
d ₁ [mm]	1000		x8
d ₂ [mm]	1200	G ₁ [mm]	G1/4
B ₁ [mm]	372	l _{G1} [mm]	15
B ₂ [mm]	100	a [mm]	12



Mating dimensions

Containing components

Groove / shaft nut	HM30/106
	0
Securing	MS30/100
	0