

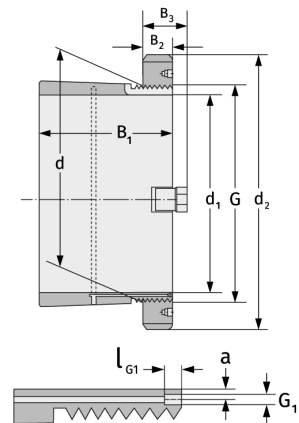
H39/1120

Clamping Sleeves



Details:

Main dimensions			
d [mm]	1120	B ₃ [mm]	125
Weight [kg]	≈ 566	G [mm]	Tr1120
d ₁ [mm]	1060		x8
d ₂ [mm]	1260	G ₁ [mm]	G1/4
B ₁ [mm]	372	l _{G1} [mm]	15
B ₂ [mm]	100	a [mm]	12



Mating dimensions	Containing components	
	Groove / shaft nut	HM30/112 0
	Securing	MS30/100 0