

H39/1320

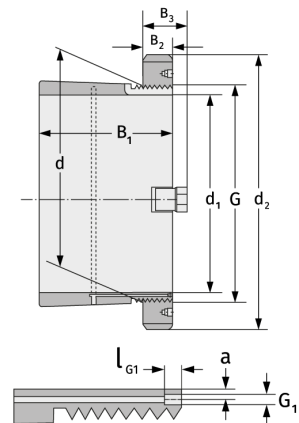
Clamping Sleeves



Details:

Main dimensions

d [mm]	1320	B ₃ [mm]	135
Weight [kg]	≈ 763	G [mm]	Tr1320
d ₁ [mm]	1250		x8
d ₂ [mm]	1460	G ₁ [mm]	G1/4
B ₁ [mm]	430	l _{G1} [mm]	15
B ₂ [mm]	110	a [mm]	14



Mating dimensions	Containing components	
	Groove / shaft nut	HM30/132 0
	Securing	MS30/100 0