

# H39/800

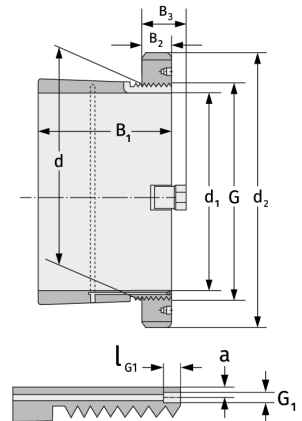
Clamping Sleeves



## Details:

### Main dimensions

|                     |       |                      |        |
|---------------------|-------|----------------------|--------|
| d [mm]              | 800   | B <sub>3</sub> [mm]  | 112    |
| Weight [kg]         | ≈ 258 | G [mm]               | Tr800x |
| d <sub>1</sub> [mm] | 750   |                      | 7      |
| d <sub>2</sub> [mm] | 920   | G <sub>1</sub> [mm]  | G1/8   |
| B <sub>1</sub> [mm] | 303   | l <sub>G1</sub> [mm] | 12     |
| B <sub>2</sub> [mm] | 90    | a [mm]               | 10     |



### Mating dimensions

### Containing components

Groove / shaft nut

HM30/800

Securing

MS30/750