

# H39/900

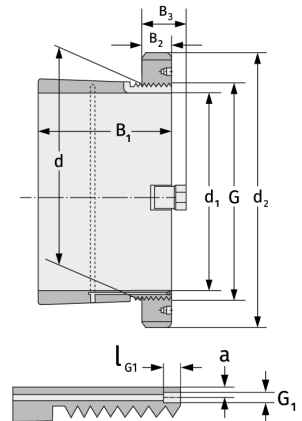
Clamping Sleeves



## Details:

### Main dimensions

d [mm]	900	B <sub>3</sub> [mm]	125
Weight [kg]	≈ 330	G [mm]	Tr900x
d <sub>1</sub> [mm]	850		7
d <sub>2</sub> [mm]	1030	G <sub>1</sub> [mm]	G1/8
B <sub>1</sub> [mm]	326	l <sub>G1</sub> [mm]	12
B <sub>2</sub> [mm]	100	a [mm]	10



### Mating dimensions

### Containing components

Groove / shaft nut

HM30/900

Securing

MS30/850